

Catana 50 Ocean Class - 2011 500 000,00 € ex VAT - Tahiti (Tahiti (French Polynesia))

The architecture of the Catana 50 makes for an elegant silhouette and gives pride of place to passenger comfort. Perfect for a family or a group of friends, the Catana 50 has a fully equipped U-shaped galley that can accommodate groups of up to ten diners with ease. Its three spacious cabins are a haven of comfort for six passengers. The excellent design of the bimini top, with an open view to the front of the boat, enables the installation of solar panels as well as providing great sunbathing opportunities.

ENGINE

Engine Hours 3581h/4038h

Engine Model Volvo D2 75F

Engines HP 2 X 75 cv

Sail drive Volvo SD 150

Cruising Speed 7.5 kts

Max Speed 9 kts

ELECTRICS

Alternator size and type Mastervolt 24V 110A / Volvo 12 V 50A x2

Service Battery 4 x 115 Amp

Engine Battery 2 x 115 Amp

Inverter Victron Energy Multiplus 24V/3000W/70A

Generator 7 KVA ONAN

Generator hours 2638 heures

Solar panel 8 x 80 W

Electrical socket

Shore power cord

Charger system Victron Energy Multiplus 24V/3000W/70A

TANKAGE

Holdings 5 x 33 L

Water 2 x 400 L

Fuel 4 x 215 L

ELECTRONICS

Wind speed and direction Raymarine ST 60plus

Compass Plastimo olympique 135

Chart plotter Raymarine C90W

Autopilot Raymarine ST6002

Radar Raymarine HD digitale

Depth sounder Raymarine ST 60 plus

VHF Radio COBRA MRF80 DSC

INVENTORY

Dream Yacht Sales Australia

Telephone: +61 (0) 457 036 756 / +61 (0) 194 893 | Email: sales@dysales.com.au

Hot water heater X 2

Air conditioning type Webasto mariner 24000 BTU

Water maker type and size 240 L/ h

Interior lighting LED

Cabin fans

Freezer 110 L

Sink size and type 2

Oven size and type

Stove 4 burners

Salt water pump

Refrigerator 160 L + 40 L

Dock lines

Primary anchor Delta 40 kg + 60m 12mm

Secondary anchor Danforth 30 kg + 20m chain 12mm 50m rope

BBQ

Bimini

List all deck cleat Spinlock XC

Davits

Traveler brand and type harken

Windlass Lofrans falcon 1700W 24V

Stack pack with lazy jacks

List all winch sizes and brand

Harken 60.2 + Harken 53.2 électrique + Harken 48.2 + Harken 42.2

RIG

SAILS

Genoa furler 70 m²

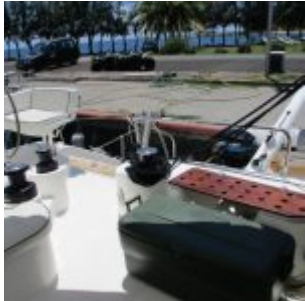
Drifter or gennaker 103 m²

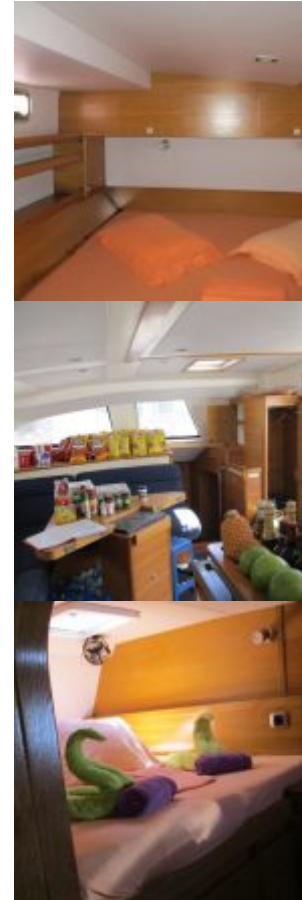
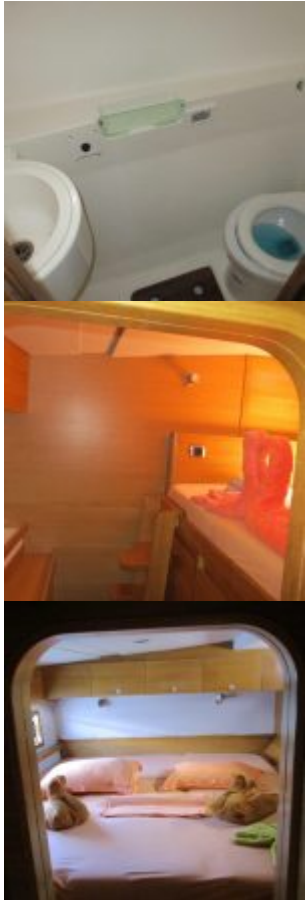
Mast type and hight Maréchal 23.70m

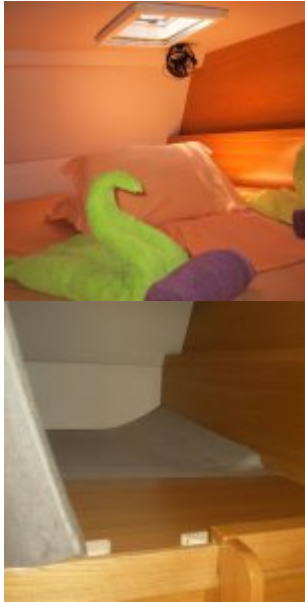
Mainsail 103 m²











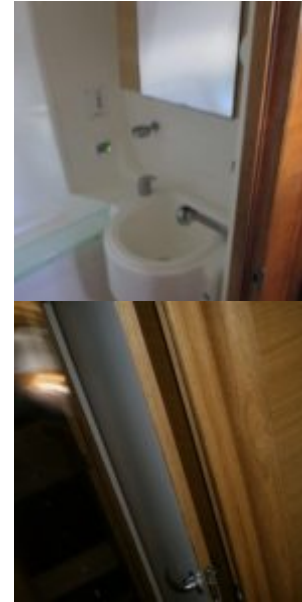
OLYMPUS DIGITAL

CAMERA



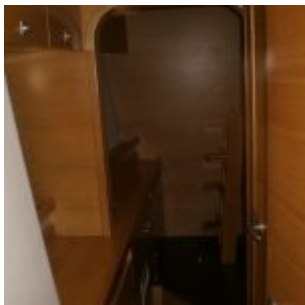
OLYMPUS DIGITAL

CAMERA



OLYMPUS DIGITAL

CAMERA



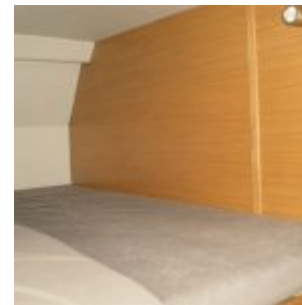
OLYMPUS DIGITAL

CAMERA



OLYMPUS DIGITAL

CAMERA



OLYMPUS DIGITAL

CAMERA



OLYMPUS DIGITAL

CAMERA