



PRINCESS CHLOE Fountaine Pajot GALATHEA 65

Priced at \$1,650,000 AUD Ex Tax

This exquisite **2010 Galathea Maestro, PRINCESS CHLOE**, is an exceptionally well maintained boat and was only used for private family vacations, never chartered. The boat has been professionally maintained by a full time captain and crew at the top level.

Fully equipped with AC, genset, water maker, freezer, icemaker and a comprehensive electronics and entertainment suites.

Similar to her smaller sisters the Fountaine Pajot Galathea 65 catamaran is built using isophthalic resins in an all-infusion composite process, assuring the lightest yet strongest multihull-construction method. The interior of this well appointed vessel is expertly crafted with high gloss wood veneers and top quality systems yet the Galathea catamaran is a long range boat with a very good turn of performance. Because of her expanded waterline length, powerful sailplan and relatively light weight this cat will satisfy liveaboard sailors and cruisers who want to minimize their exposure time at sea.

The Galathea 65 catamaran features double semi-flybridge cockpits a beautifully shaped composite-bimini that is visually integrated into the sleek and low saloon house. An expansive main deck and outside cockpit are on the same level and the innovative aft platform serves as a sundeck and dinghy storage.

This stunning Galathea 65 catamaran by Fountaine Pajot is regarded by many as the sleekest and best looking catamaran of the builder's flagship range. With 5 Cabins and 4 Bathrooms and a beautifully appointed Galley and interior this Catamaran is the height of Luxury Sailing. Princess

Dream Yacht Sales Australia

Telephone: +61 (0) 457 036 756 / +61 (0) 194 893 | Email: sales@dysales.com.au



Chloe is currently Sailing to Tahiti and will be available to view there. Contact us on 0457 036 756 for further information.

Photo Gallery

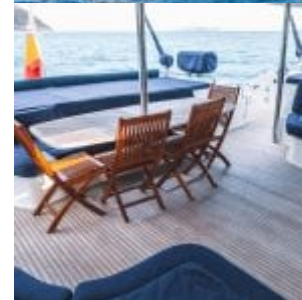


Princess Chloe Fountaine

Pajot Galathea 65

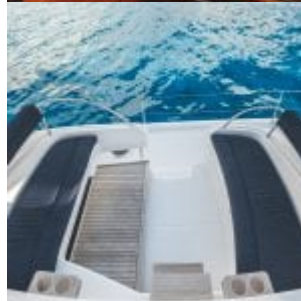


“Princess Chloe” Fountaine Pajot Galathea 65 FOR SALE | 3





“Princess Chloe” Fountaine Pajot Galathea 65 FOR SALE | 4



Dream Yacht Sales Australia
Telephone: +61 (0) 457 036 756 / +61 (0) 194 893 | Email: sales@dysales.com.au



“Princess Chloe” Fountaine Pajot Galathea 65 FOR SALE | 5



Dream Yacht Sales Australia
Telephone: +61 (0) 457 036 756 / +61 (0) 194 893 | Email: sales@dysales.com.au

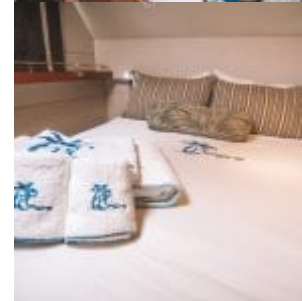
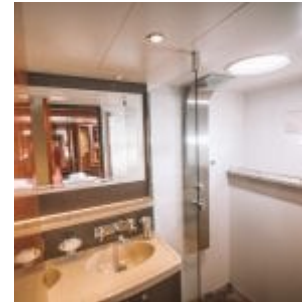


“Princess Chloe” Fountaine Pajot Galathea 65 FOR SALE | 6



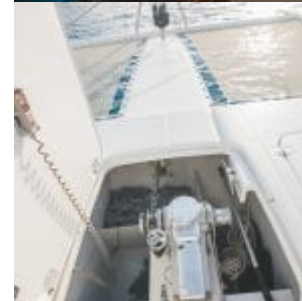
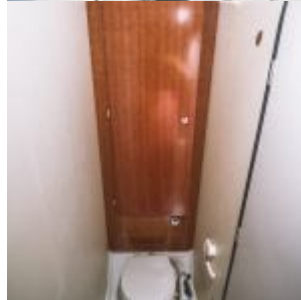


“Princess Chloe” Fountaine Pajot Galathea 65 FOR SALE | 7





“Princess Chloe” Fountaine Pajot Galathea 65 FOR SALE | 8





“Princess Chloe” Fountaine Pajot Galathea 65 FOR SALE | 9



Additional Specs, Equipment and Information

Specs

Builder: Fountaine Pajot

Designer: Berret-Racoupeau

5 Cabins

4 Heads

Keel: Twin Keel

Dimensions

LOA: 65 ft 0 in

Beam: 31 ft 2 in

Dry Weight: 45000 lbs

Dream Yacht Sales Australia

Telephone: +61 (0) 457 036 756 / +61 (0) 194 893 | Email: sales@dysales.com.au



Engines

Total Power: 300 HP

Engine 1:

Engine Brand: Volvo

Year Built: 2010

Engine/Fuel Type: Diesel

Engine Hours: 2950

Drive Type: Direct Drive

Engine Power: 150 HP

Engine 2:

Engine Brand: Volvo

Year Built: 2010

Maximum Speed: 12 mph

Engine/Fuel Type: Diesel

Engine Hours: 2950

Drive Type: Direct Drive

Engine Power: 150 HP

Dream Yacht Sales Australia

Telephone: +61 (0) 457 036 756 / +61 (0) 194 893 | Email: sales@dysales.com.au



Cruising Speed: 11 mph

Tanks

Fresh Water Tanks: (771 Gallons)

Fuel Tanks: (370 Gallons)

Owner Added Factory Options

Gennaker on furler

Cockpit in teak

dish washer

2 upgraded Volvo D3 150HP engines

folding props for 150HP engines

Cockpit cushions

washer/dryer 5kg

watermaker 240l/hr

full boat airconditioning

safety equipment without liferaft

MP8 container liferaft

antifouling, primary epoxy

Alcantara interior cushions



1 electric winch for mainsheet
2 Genoa electric winches
2 electric winches for Gennaker
2nd swim ladder
Icemaker (located port aft saloon)
Courtesy Lighting
Combination Lock Safe
windows saloon curtains
additional deck shower
outside freshwater outlet (in cockpit)
outside seawater outlet (in anchor locker)
2 additional batteries 24V
waterproof exterior outlet 12V
3 solar panels 170W/24V
charger/inverter 4000W/120A
2 rope cutters
windlass control at helm
Lectrasan system for all heads with valve for direct discharge
electric cabin fans in all cabins

custom interior as ordered



darker wood for walls and furniture
Hydranet Staysail with furler
110V power supply for microwave (owner supplied)
Trash Compactor
flipping backrest on helm seat
dining bench sliding under table
dining table up/down and storage in saloon
bottle storage
custom micro wave cabinet
dinghy installations/modification of sunplatform and davits
washer dryer plumbing and installation
installation of tv's+hifi in saloon, cockpit and fly
installation of tv's+jvc hifi units in cabins
installation of PS3 players including power supplies in cabins
installation of kvh sat tv system
installation of Northstar nav equipment
installation of communication equipment
dinghy Caribe Avantage XT400 +40HP Yamaha
supply of MFD8 Navnet 3 + radar 4KW +GPS
underwater lights (one under each stern)



mast lights (blue leds over and under spreaders)

upgrade to electric halyard winch

MP8 container life raft